

# For Lease

## Summerhill Professional Building 6936 Pine Arbor Drive, Cottage Grove MN 55016



### PROPERTY DETAILS

#### Summerhill Professional Building

**Building Size:** 37,623 SF

**Space Available:** 15,567 SF

**Divisible to:** 1,500 SF

**Year Built:** 2007

**Lease Rates:** Negotiable

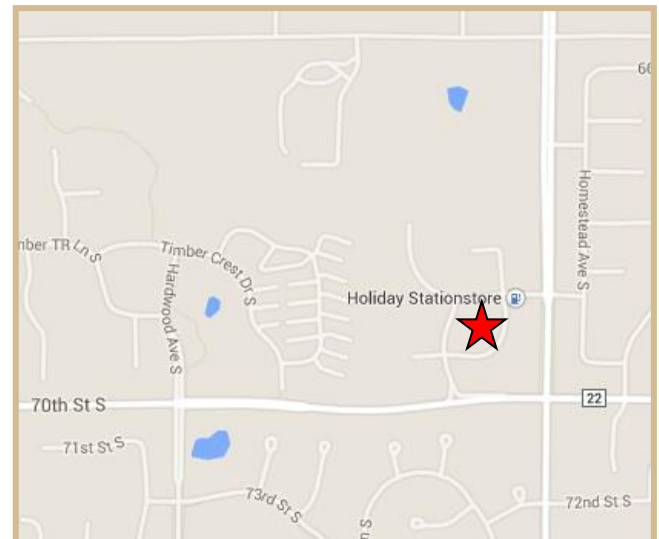
**CAM:** \$6.57/SF

**Taxes:** \$3.45/SF

- **Mixed development: Medical, Office & Retail**
- **Attractive two-story medical/office building**
- **On building signage possible**
- **Anchor tenant: HealthEast Clinic**
- **Developed and Managed by MSP Commercial**



### LOCATION



Mark Young  
Vice President, Sales and Leasing  
Direct | 651-233-2435  
Mobile | 651-307-2371

John Higgins  
Vice President, Sales and Leasing  
Direct | 651-209-0520  
Mobile | 612-702-3104

7300 Hudson Blvd., Suite 210  
Oakdale, MN 55128  
Main | 651-731-0708  
Fax | 651-735-1228  
www.crossroadsproperties.net

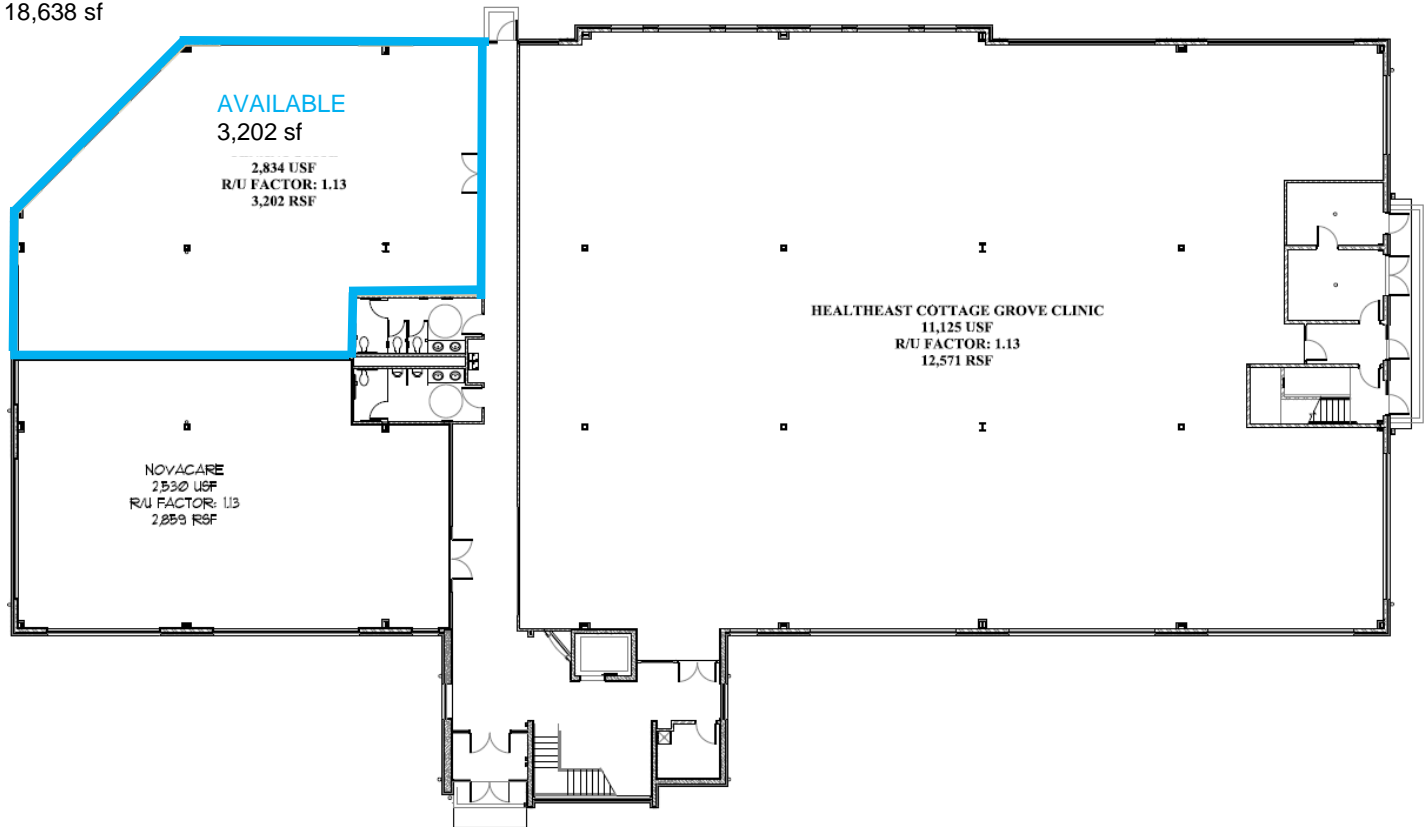
**CROSSROADS  
PROPERTIES**

# For Lease

## Summerhill Professional Building 6936 Pine Arbor Drive, Cottage Grove MN 55016

### FLOOR PLAN

FIRST FLOOR  
18,638 sf



1st FLOOR AS-BUILT / MARKETING PLAN  
1/16" = 1'-0"

Mark Young  
Vice President, Sales and Leasing  
Direct | 651-233-2435  
Mobile | 651-307-2371

John Higgins  
Vice President, Sales and Leasing  
Direct | 651-209-0520  
Mobile | 612-702-3104

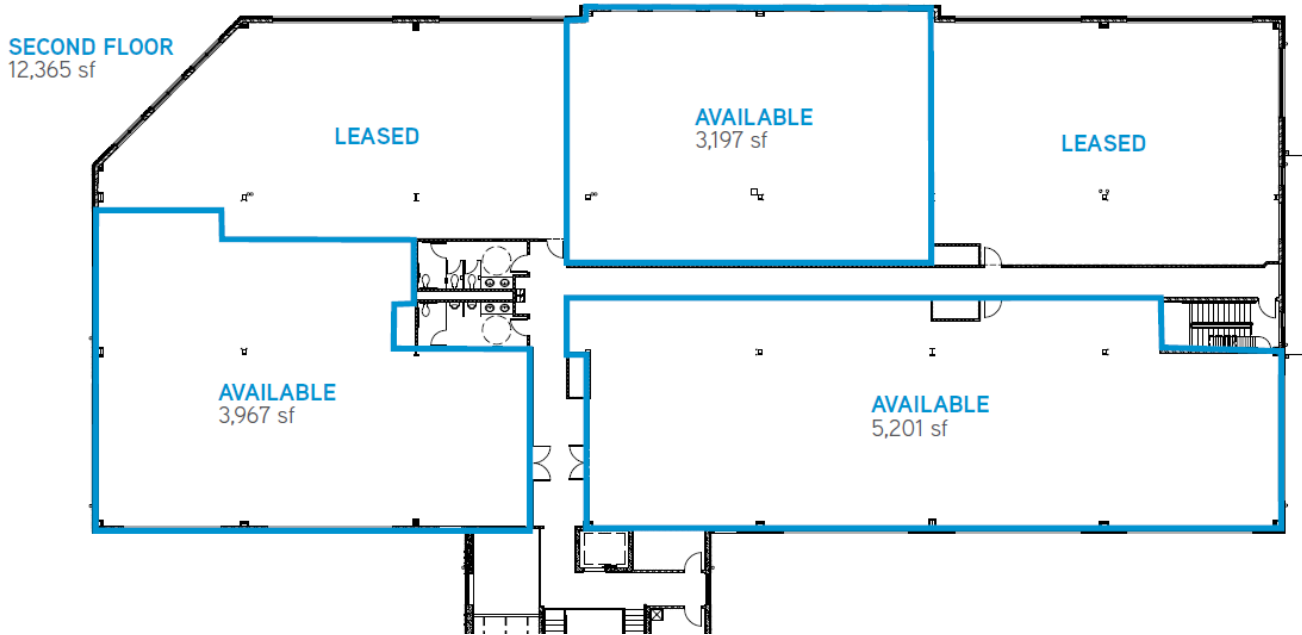
7300 Hudson Blvd., Suite 210  
Oakdale, MN 55128  
Main | 651-731-0708  
Fax | 651-735-1228  
[www.crossroadsproperties.net](http://www.crossroadsproperties.net)

**CROSSROADS**  
**PROPERTIES**

**For Lease**

**Summerhill Professional Building**  
6936 Pine Arbor Drive, Cottage Grove MN 55016

**FLOOR PLAN**



Mark Young  
Vice President, Sales and Leasing  
Direct | 651-233-2435  
Mobile | 651-307-2371

John Higgins  
Vice President, Sales and Leasing  
Direct | 651-209-0520  
Mobile | 612-702-3104

7300 Hudson Blvd., Suite 210  
Oakdale, MN 55128  
Main | 651-731-0708  
Fax | 651-735-1228  
[www.crossroadsproperties.net](http://www.crossroadsproperties.net)

**CROSSROADS**  
**PROPERTIES**

**For Lease**

**Summerhill Professional Building**  
6936 Pine Arbor Drive, Cottage Grove MN 55016

**SITE PLAN**



Mark Young  
Vice President, Sales and Leasing  
Direct | 651-233-2435  
Mobile | 651-307-2371

John Higgins  
Vice President, Sales and Leasing  
Direct | 651-209-0520  
Mobile | 612-702-3104

7300 Hudson Blvd., Suite 210  
Oakdale, MN 55128  
Main | 651-731-0708  
Fax | 651-735-1228  
www.crossroadsproperties.net

**CROSSROADS**  
**PROPERTIES**