

For Lease

600 Inwood Ave, Suite 260
Oakdale, MN 55128



PROPERTY DETAILS

Lake Elmo Bank Building

Building Size: 35,500 SF

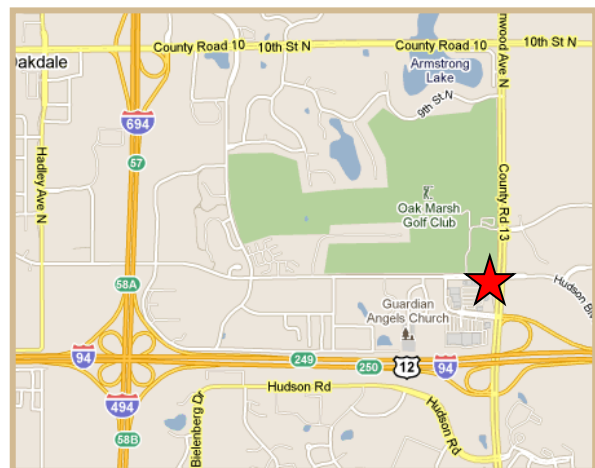
Suite 260: 2,997 SF

Lease Rate: From \$23.00/SF Gross

Amenities:

- Building Conference Room
- Class A Space
- Snack/Soda Area
- Underground parking with car wash
- Shower/locker room on site

LOCATION



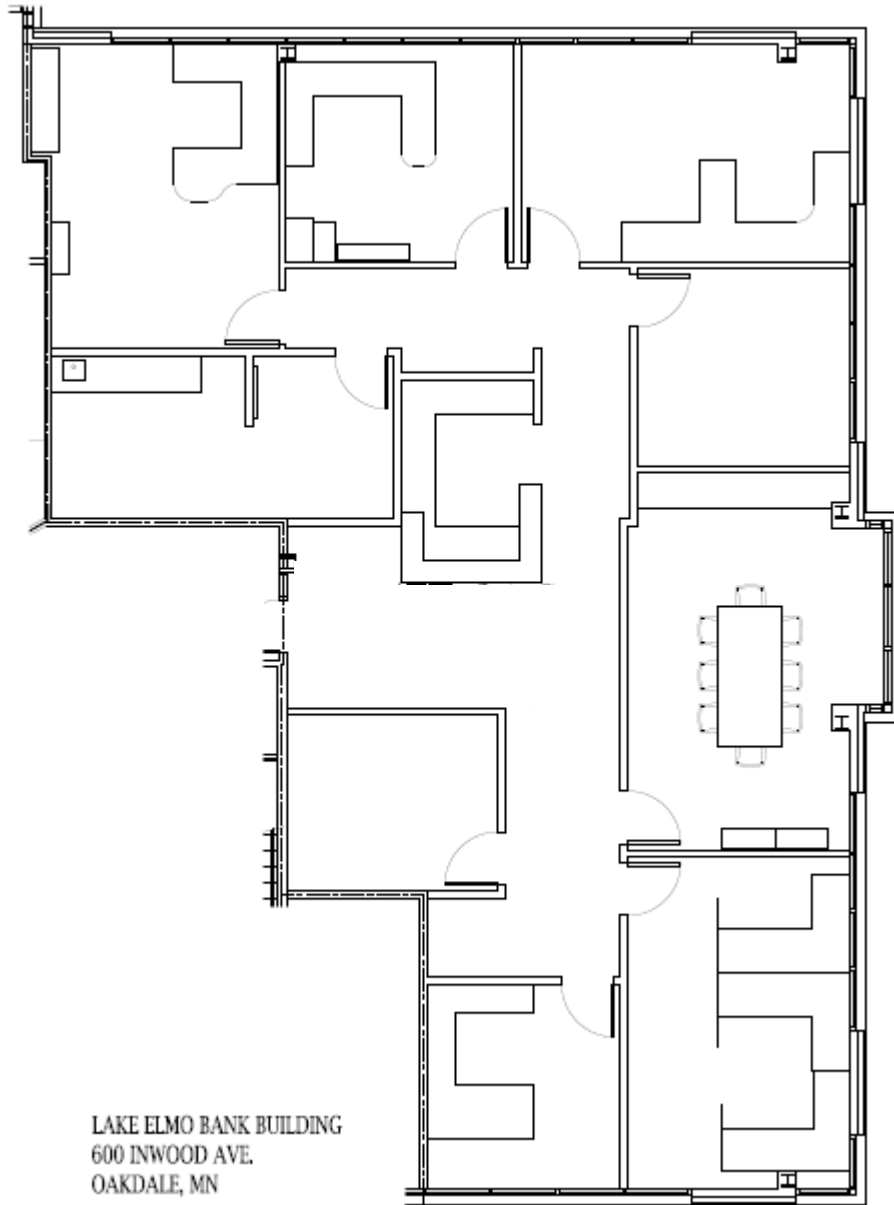
**CROSSROADS
PROPERTIES**

7300 Hudson Blvd., Suite 210
Oakdale, MN 55128
Main | 651-731-0708
Fax | 651-735-1228
www.crossroadsproperties.net

For Lease

**600 Inwood Ave, Suite 260
Oakdale, MN 55128**

FLOOR PLAN



**CROSSROADS
PROPERTIES**

7300 Hudson Blvd., Suite 210
Oakdale, MN 55128
Main | 651-731-0708
Fax | 651-735-1228
www.crossroadsproperties.net