

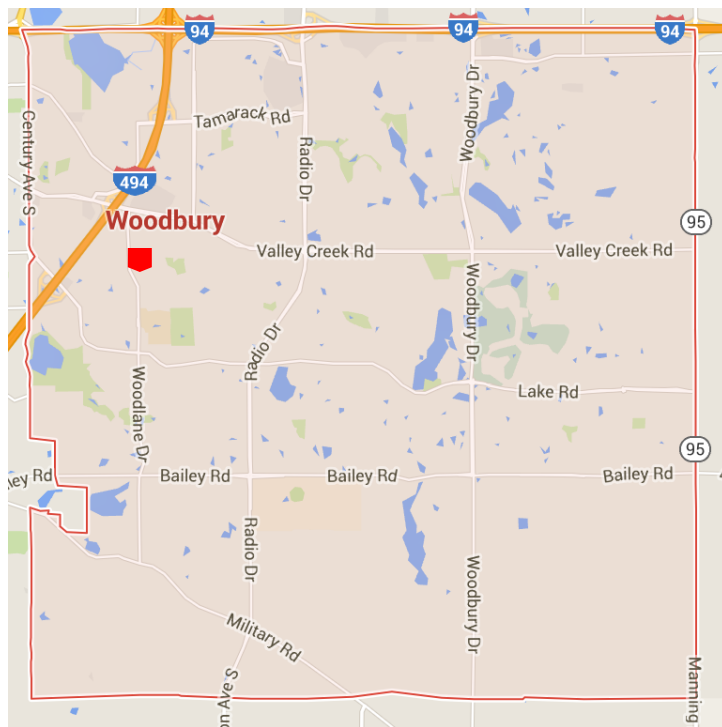
For Lease

Woodhill Office Park 2145 Woodlane Drive, Woodbury MN 55125



Property Summary

- 3 Building Office Park For Lease
- Easy Access from Valley Creek & 494
- High-end landscaping
- Monument signage available
- Updated building exterior and common areas
- Lease rate: Negotiable
- Available Suites:
 - Suite 102 – 758 sf
 - Suite 101 B – 1,400 sf



Mark Young
Vice President, Sales and Leasing
Direct | 651-233-2435
Mobile | 651-307-2371

John Higgins
Vice President, Sales and Leasing
Direct | 651-209-0520
Mobile | 612-702-3104

7300 Hudson Blvd., Suite 210
Oakdale, MN 55128
Main | 651-731-0708
Fax | 651-735-1228
www.crossroadsproperties.net

**CROSSROADS
PROPERTIES** 

For Lease

Woodhill Office Park
2145 Woodlane Drive, Woodbury MN 55125

Property Information

Address 2145, 2155, 2165 Woodlane Drive, Woodbury, MN 55125

Complex

Building 2145 – Suite 102	– 758 sf
Suite 101B	– 1,400 sf
Building 2155 – Suite 101	– 2,944 sf
Suite 103	– 1,463 sf
Suite 101/103	– 4,407 sf
Suite 200	– 1,205 sf

Year Built 1998

Signage Monument Signage along Woodlane Drive

Parking 4.14/ 1,000

Access Tamarack Road & Valley Creek Road.

Lease Terms Lease rate: Negotiable

Building Expenses \$3.26 psf tax
\$7.71 psf CAM
\$10.97 total per square foot

Notes

- Executive Size Offices
- Professional image with beautiful landscaping
- Private Garden Patio
- Updated common areas
- Onsite management
- Woodbury address

Mark Young
Vice President, Sales and Leasing
Direct | 651-233-2435
Mobile | 651-307-2371

John Higgins
Vice President, Sales and Leasing
Direct | 651-209-0520
Mobile | 612-702-3104

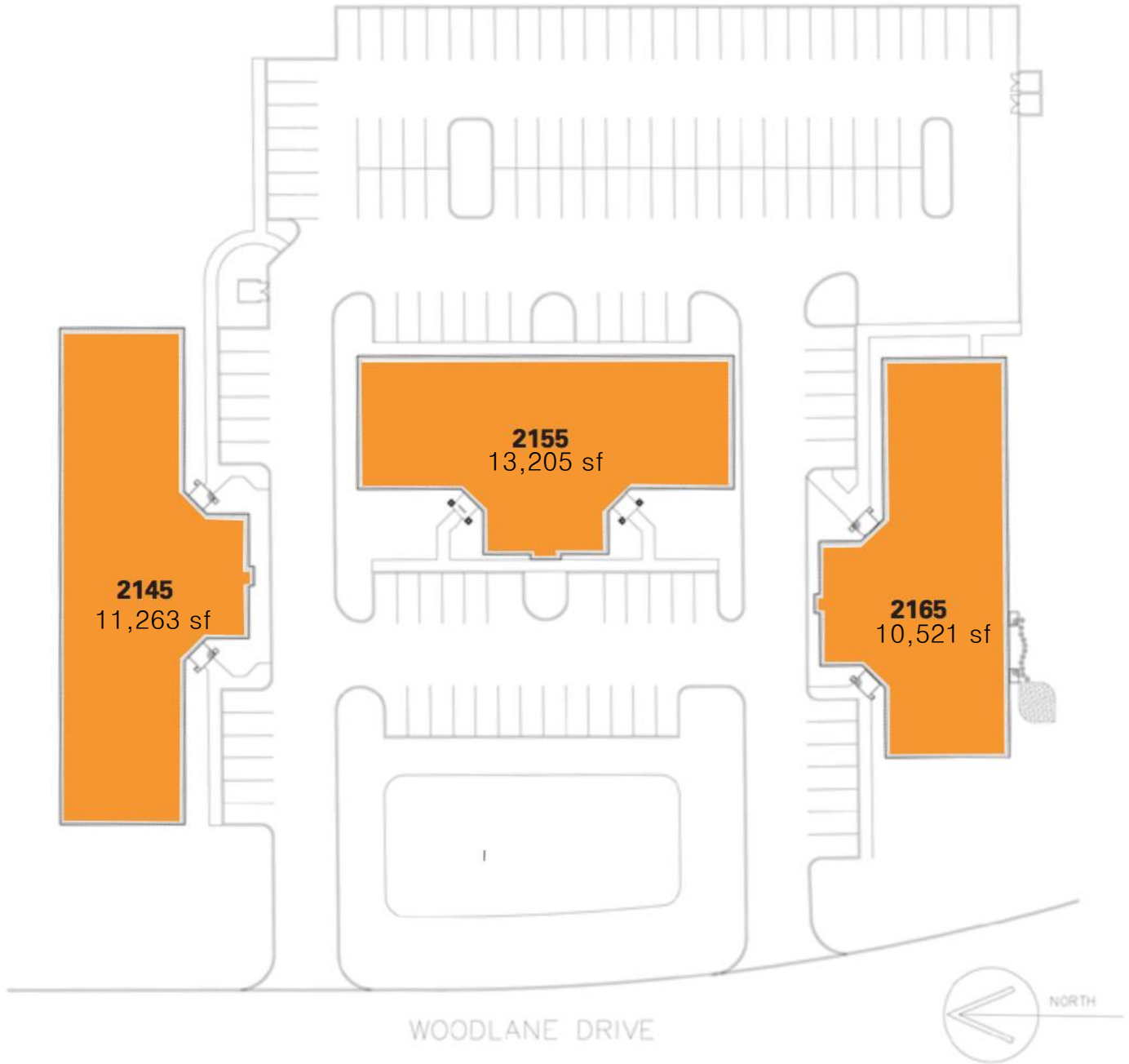
7300 Hudson Blvd., Suite 210
Oakdale, MN 55128
Main | 651-731-0708
Fax | 651-735-1228
www.crossroadsproperties.net

CROSSROADS
PROPERTIES 

For Lease

Woodhill Office Park
2145 Woodlane Drive, Woodbury MN 55125

Site Plan



Mark Young
Vice President, Sales and Leasing
Direct | 651-233-2435
Mobile | 651-307-2371

John Higgins
Vice President, Sales and Leasing
Direct | 651-209-0520
Mobile | 612-702-3104

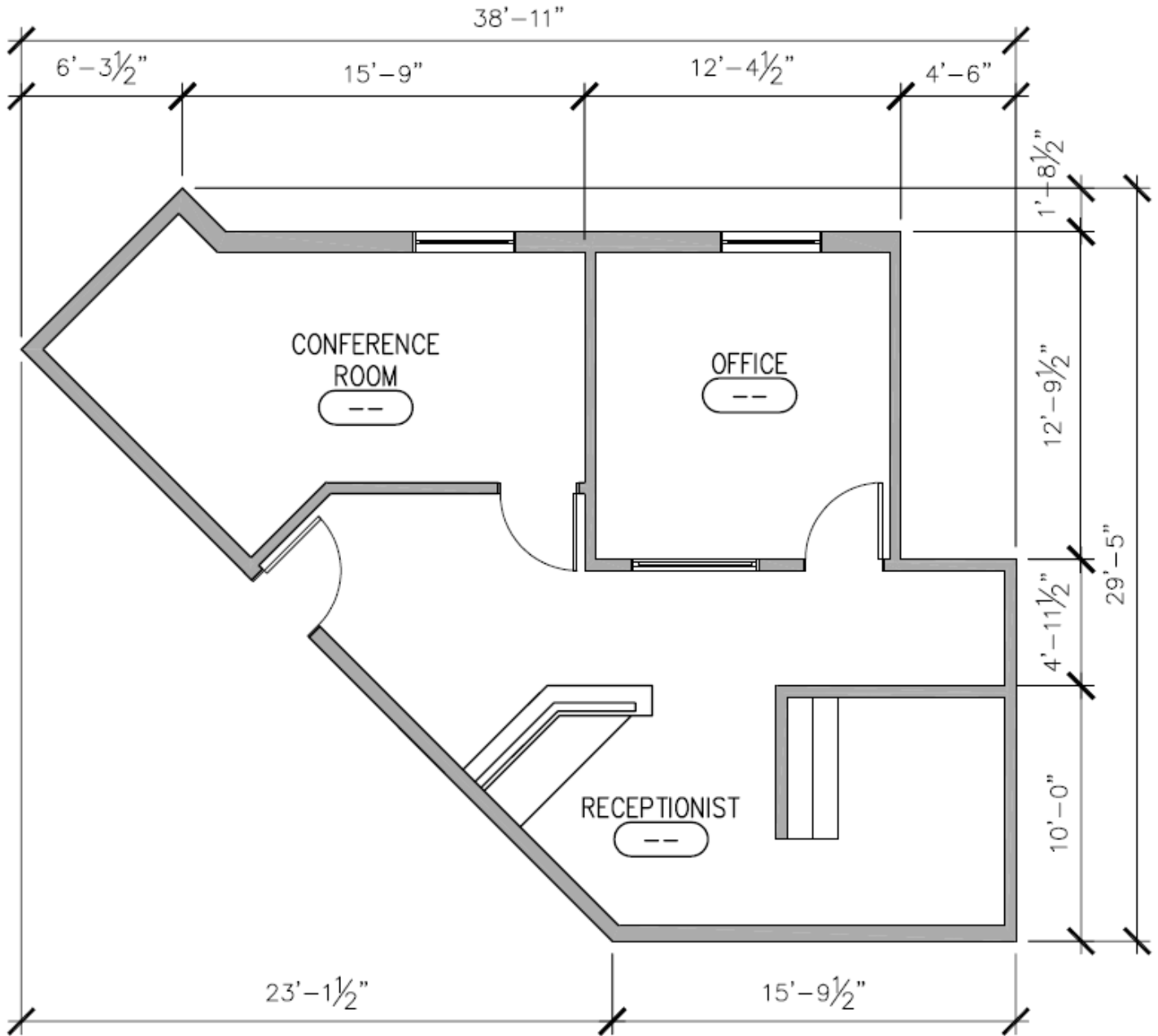
7300 Hudson Blvd., Suite 210
Oakdale, MN 55128
Main | 651-731-0708
Fax | 651-735-1228
www.crossroadsproperties.net

**CROSSROADS
PROPERTIES**

For Lease

Woodhill Office Park
2145 Woodlane Drive, Woodbury MN 55125

2145 Building, Suite 102 – 758 SF



Mark Young
Vice President, Sales and Leasing
Direct | 651-233-2435
Mobile | 651-307-2371

John Higgins
Vice President, Sales and Leasing
Direct | 651-209-0520
Mobile | 612-702-3104

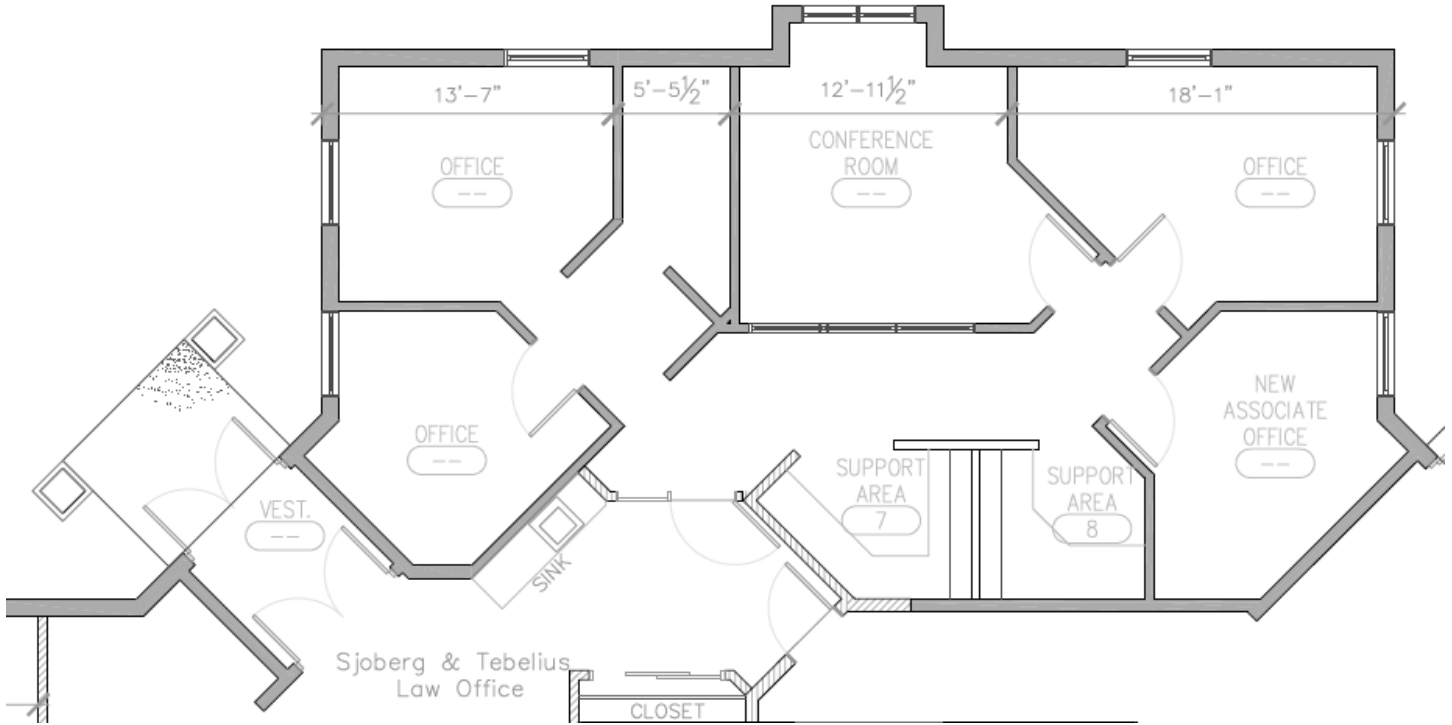
7300 Hudson Blvd., Suite 210
Oakdale, MN 55128
Main | 651-731-0708
Fax | 651-735-1228
www.crossroadsproperties.net

CROSSROADS
PROPERTIES

For Lease

Woodhill Office Park
2145 Woodlane Drive, Woodbury MN 55125

2145 Building, Suite 101B – 1,400 SF



Mark Young
Vice President, Sales and Leasing
Direct | 651-233-2435
Mobile | 651-307-2371

John Higgins
Vice President, Sales and Leasing
Direct | 651-209-0520
Mobile | 612-702-3104

7300 Hudson Blvd., Suite 210
Oakdale, MN 55128
Main | 651-731-0708
Fax | 651-735-1228
www.crossroadsproperties.net



For Lease

Woodhill Office Park
2145 Woodlane Drive, Woodbury MN 55125

Additional Photos



Mark Young
Vice President, Sales and Leasing
Direct | 651-233-2435
Mobile | 651-307-2371

John Higgins
Vice President, Sales and Leasing
Direct | 651-209-0520
Mobile | 612-702-3104

7300 Hudson Blvd., Suite 210
Oakdale, MN 55128
Main | 651-731-0708
Fax | 651-735-1228
www.crossroadsproperties.net

CROSSROADS
PROPERTIES 