

For Lease

1875 W Highway 36
Roseville, MN 55113



2ND & 3RD FLOORS AVAILABLE



Building Size: 14,091 SF
2ND Level: 2,400 SF
3rd Level: 3,300 SF

- Located in Roseville off Hwy 36 and 35W
- One block from Rosedale Mall and Restaurants
- Great visibility and easy access
- Glass lined offices
- Common area kitchen
- Storage space available

Mark Young
Vice President
(D) 651-233-2435
(M) 651-307-2371

John Higgins
Vice President
(D) 651-209-0520
(M) 612-702-3104

7300 Hudson Blvd. North Suite 210
Oakdale, MN 55128
(O) 651-731-0708
www.crossroadsproperties.net

CROSSROADS
PROPERTIES 

Building Notes

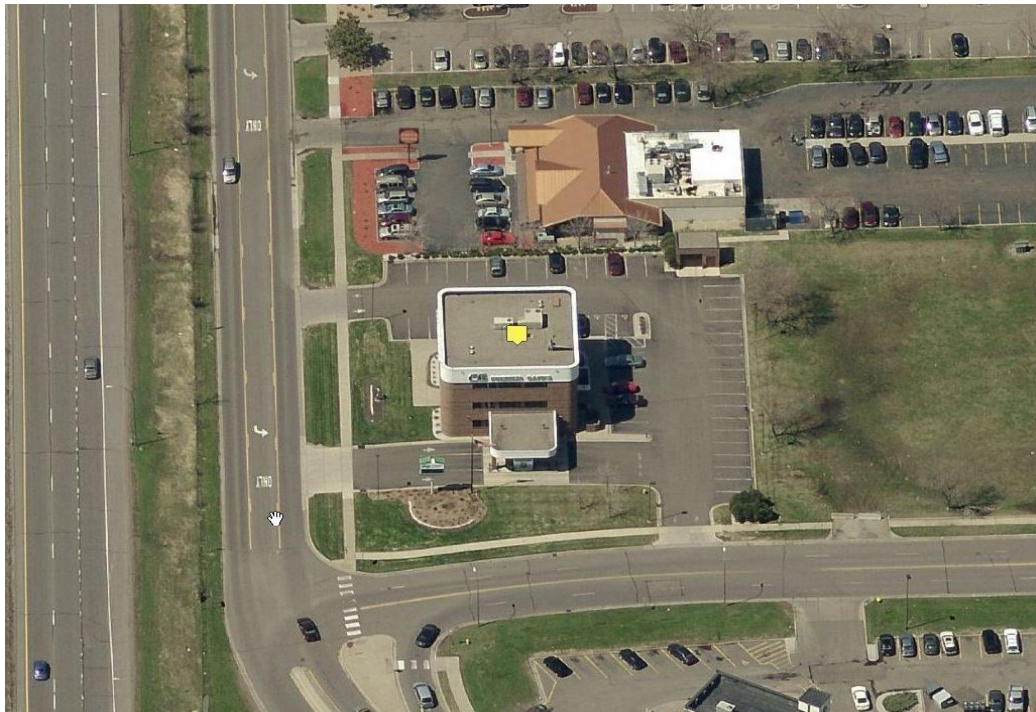
- Building Type: Office
- Availability: Immediately
- Lease Rate: \$17 - \$20 PSF Gross
- Available Space:

Suite 200 - 2,400 SF

Suite 300 - 3,300 SF

Total - 5,700 SF

Site Plan



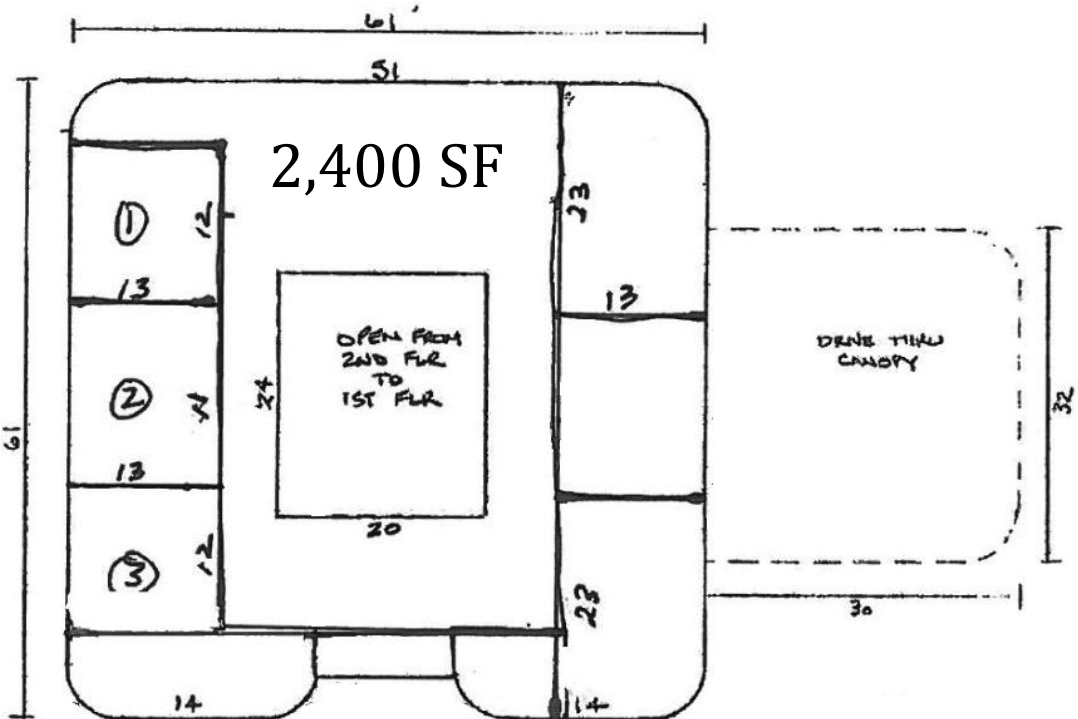
Mark Young
Vice President
(D) 651-233-2435
(M) 651-307-2371

John Higgins
Vice President
(D) 651-209-0520
(M) 612-702-3104

7300 Hudson Blvd. North Suite 210
Oakdale, MN 55128
(O) 651-731-0708
www.crossroadsproperties.net

CROSSROADS
PROPERTIES 

Floor 2



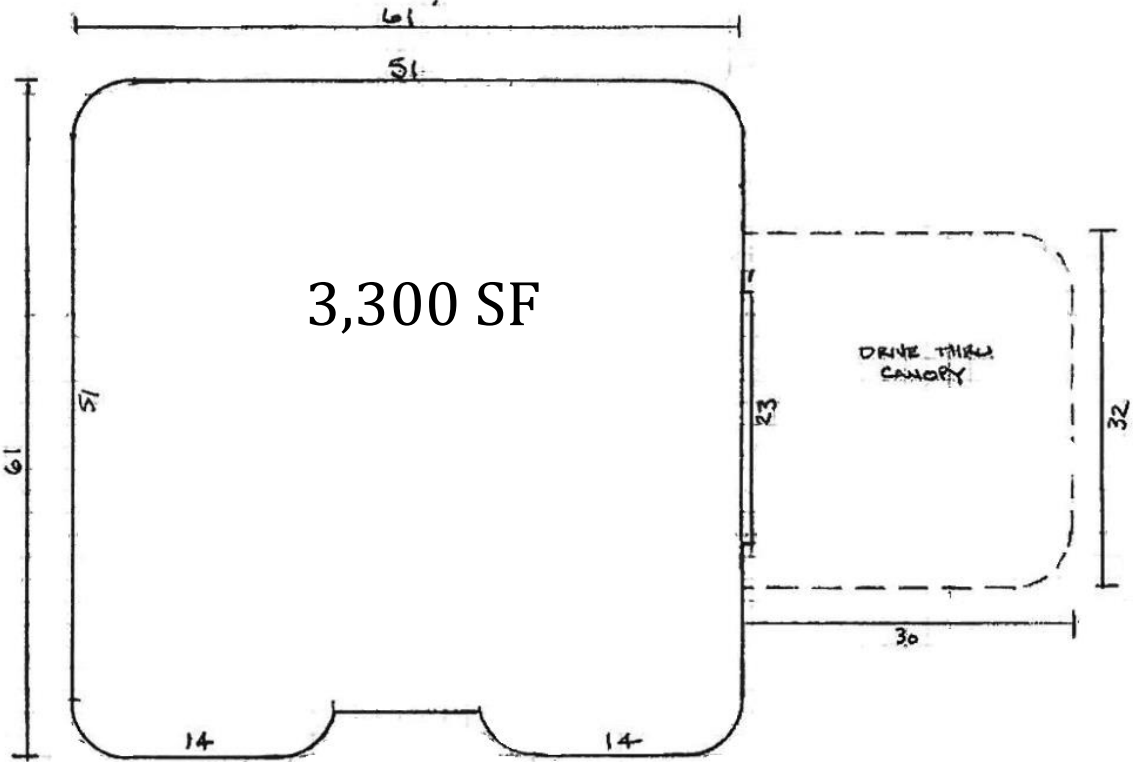
Mark Young
Vice President
(D) 651-233-2435
(M) 651-307-2371

John Higgins
Vice President
(D) 651-209-0520
(M) 612-702-3104

7300 Hudson Blvd. North Suite 210
Oakdale, MN 55128
(O) 651-731-0708
www.crossroadsproperties.net



Floor 3



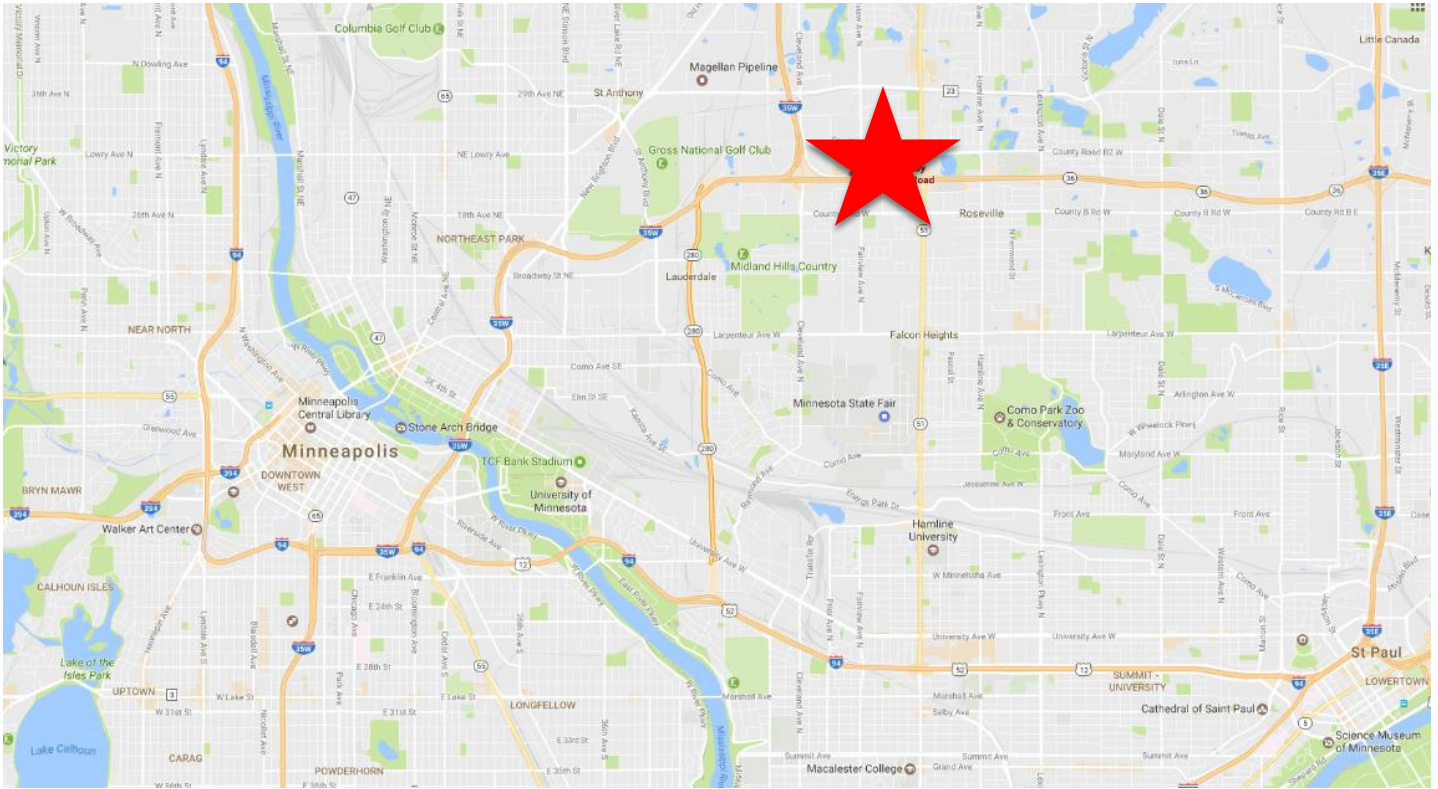
Mark Young
Vice President
(D) 651-233-2435
(M) 651-307-2371

John Higgins
Vice President
(D) 651-209-0520
(M) 612-702-3104

7300 Hudson Blvd. North Suite 210
Oakdale, MN 55128
(O) 651-731-0708
www.crossroadsproperties.net



Location



Mark Young
Vice President
(D) 651-233-2435
(M) 651-307-2371

John Higgins
Vice President
(D) 651-209-0520
(M) 612-702-3104

7300 Hudson Blvd. North Suite 210
Oakdale, MN 55128
(O) 651-731-0708
www.crossroadsproperties.net

