

# For Sale or Lease



2721 Upper Afton Road, Maplewood MN 55109

## Single Story Office Building in Maplewood

- Building Size: 2,048 SF
- Year Built: 1971
- Space Available: 2,048 SF
- Lease Rate: Negotiable
- Sale Price: \$270,000
- Taxes: \$6,610
- Lot Size: .26 Acres
- Furnace and AC replaced in 2016
- New HVAC sheet metal throughout 2016
- New electrical wiring and fixtures 2016
- New windows, flooring, bathroom fixtures 2016
- Located ½ mile south of I94 near 3M campus



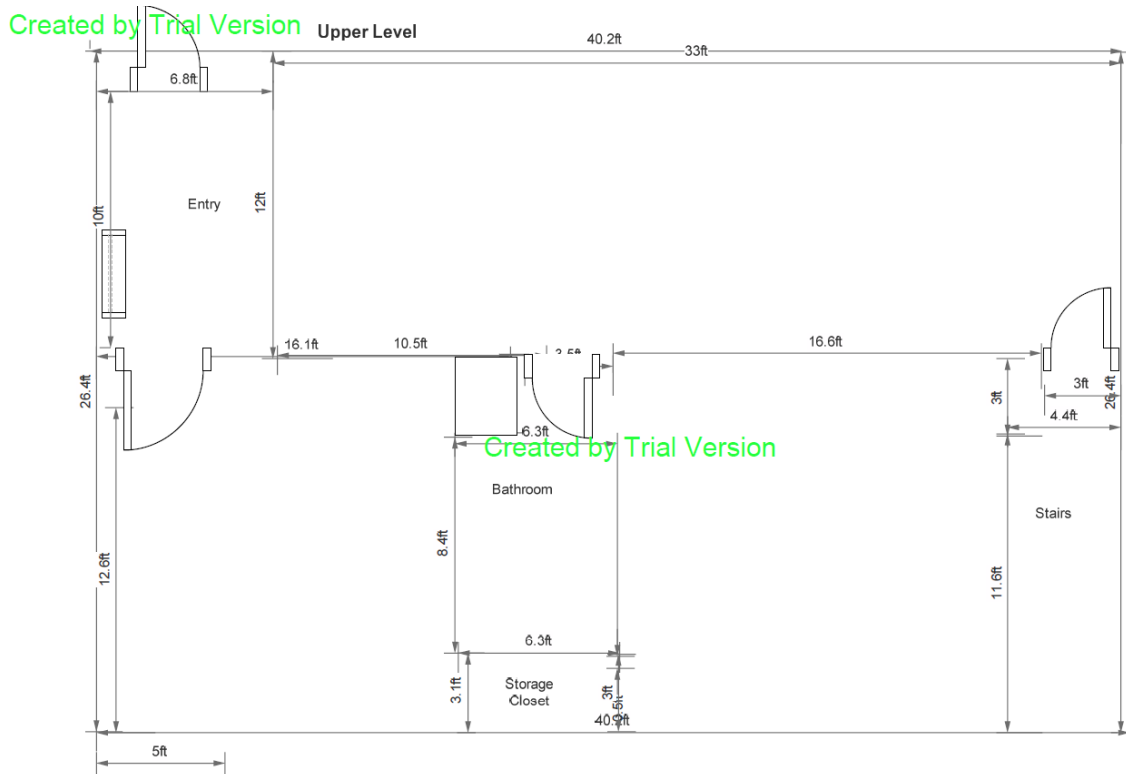
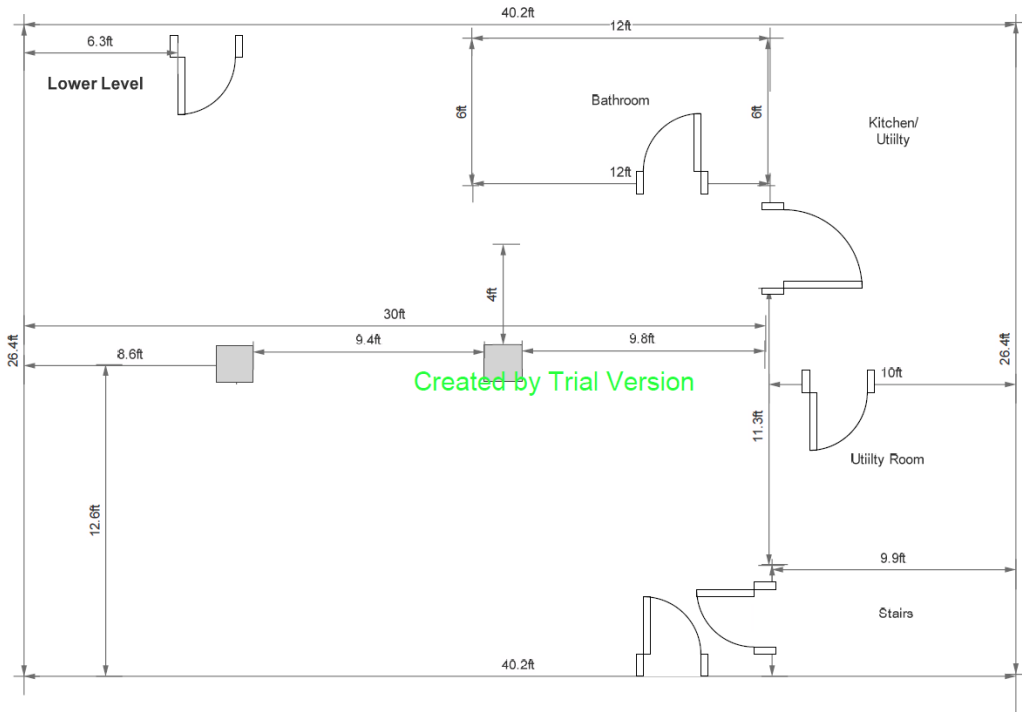
John Higgins  
Vice President, Sales and Leasing  
(D) 651-209-0520  
(M) 612-702-3104

Mark Young  
Vice President, Sales and Leasing  
(D) 651-233-2435  
(M) 651-307-2371

7300 Hudson Blvd., Suite 210  
Oakdale, MN 55128  
Main | 651-731-0708  
Fax | 651-735-1228  
www.crossroadsproperties.net

CROSSROADS  
PROPERTIES

# Floor Plans



John Higgins  
 Vice President, Sales and Leasing  
 (D) 651-209-0520  
 (M) 612-702-3104

Mark Young  
 Vice President, Sales and Leasing  
 (D) 651-233-2435  
 (M) 651-307-2371

7300 Hudson Blvd., Suite 210  
 Oakdale, MN 55128  
 Main | 651-731-0708  
 Fax | 651-735-1228  
 www.crossroadsproperties.net

