

**For Sale or
Lease**

5713 Geneva Ave N Oakdale, MN 55128

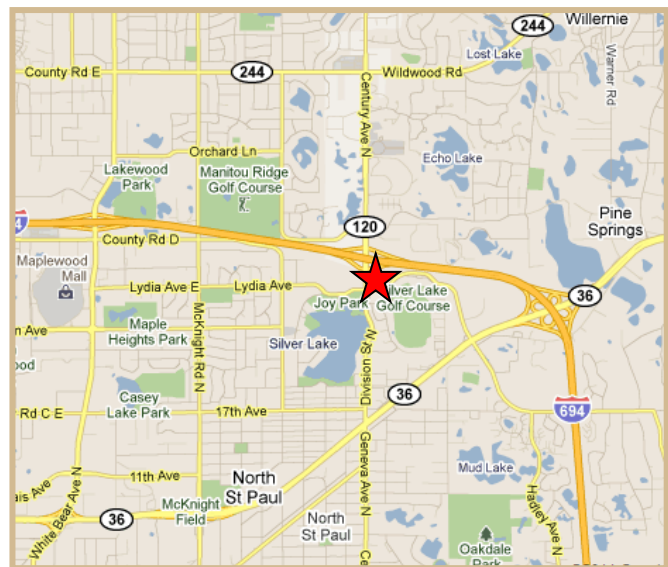


PROPERTY DETAILS

Stand Alone Building located on the SE corner of 694 and Century Avenue

Year Built: 1999
Building Size: 5,476 SF
Lot Size: .65 Acres
Sprinkler: Yes, wet
Lease Rate: Negotiable
Sale Price: \$525,000
2017 Taxes: \$16,728
PID #: 06.029.21.22.0007

LOCATION



Mark Young
Vice President, Sales and Leasing
Direct | 651-233-2435
Mobile | 651-307-2371

John Higgins
Vice President, Sales and Leasing
Direct | 651-209-0520
Mobile | 612-702-3104

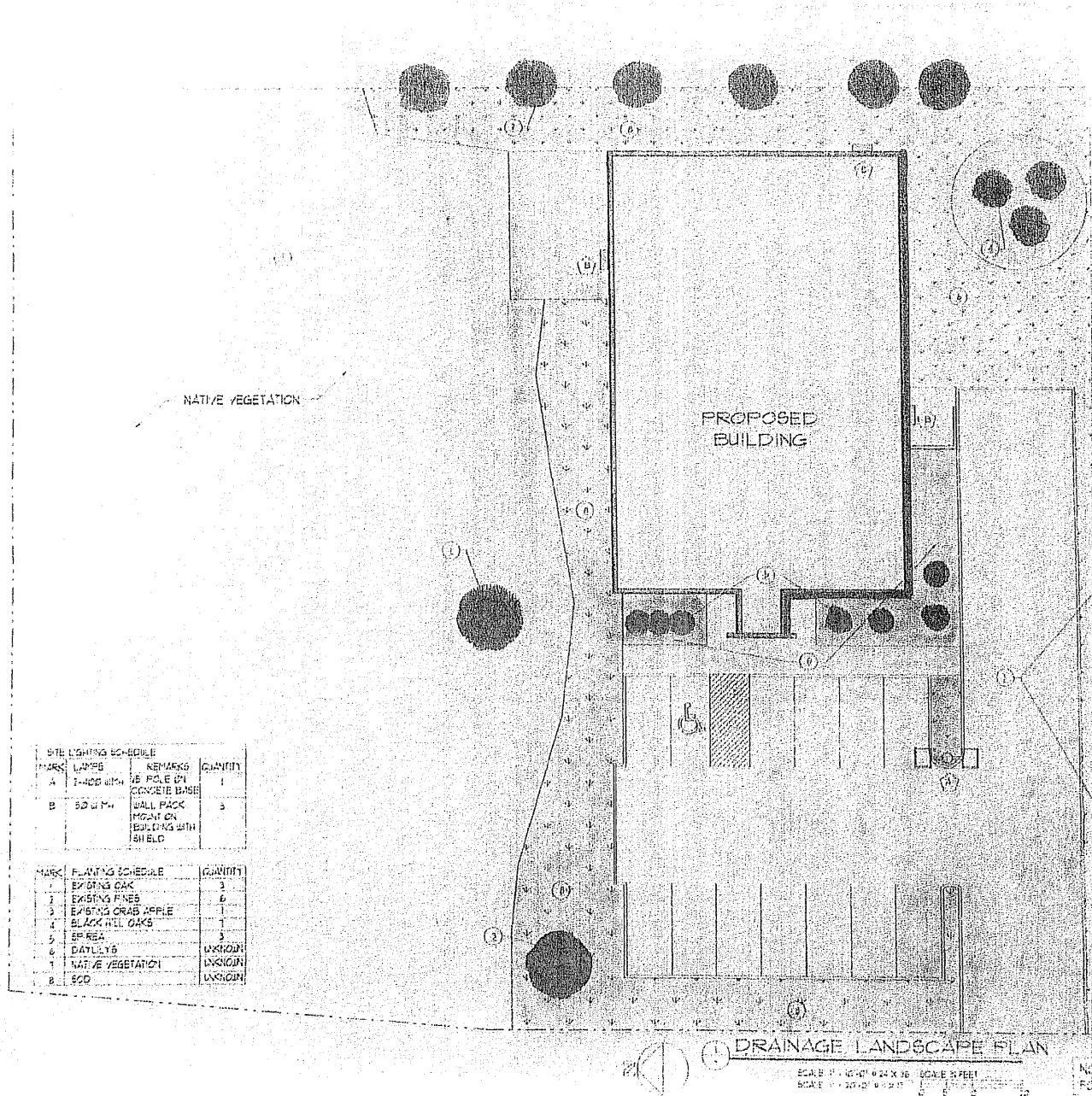
7300 Hudson Blvd., Suite 210
Oakdale, MN 55128
Main | 651-731-0708
Fax | 651-735-1228
www.crossroadsproperties.net

**CROSSROADS
PROPERTIES**

**For Sale or
Lease**

5713 Geneva Ave N Oakdale, MN 55128

Site Plan



Mark Young
Vice President, Sales and Leasing
Direct | 651-233-2435
Mobile | 651-307-2371

John Higgins
Vice President, Sales and Leasing
Direct | 651-209-0520
Mobile | 612-702-3104

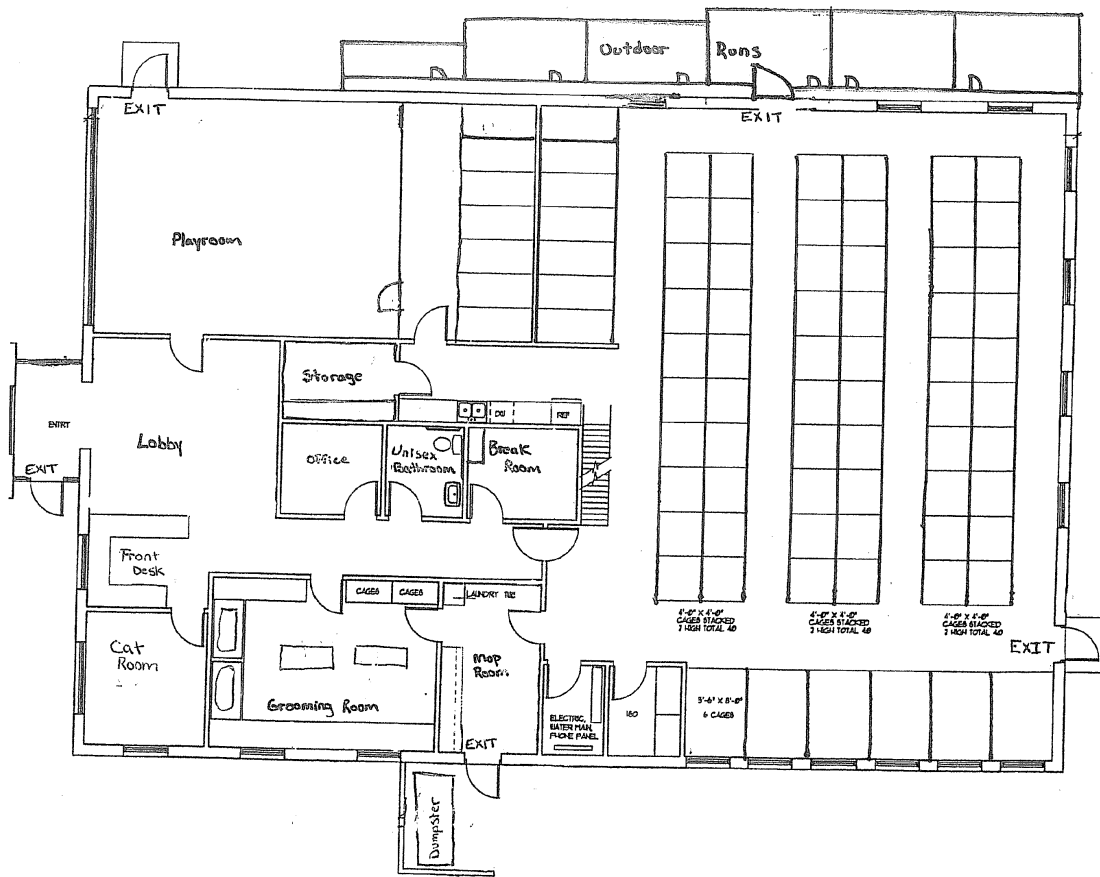
7300 Hudson Blvd., Suite 210
Oakdale, MN 55128
Main | 651-731-0708
Fax | 651-735-1228
www.crossroadsproperties.net



**For Sale or
Lease**

5713 Geneva Ave N Oakdale, MN 55128

Floor Plan



DEA ARCHITECTS
 200 Linden Street
 Oakdale, MN 55128
 (612) 730-0202
 www.dea-architects.com
 10/15/2015

FLOOR PLAN
 MORRISON KENNELS
 OAKDALE, MN 55128
 KEELIN COMPANY
 7300 HUDSON BLVD. N. SUITE 210 OAKDALE, MN 55128

REVISIONS:
 1. REVISION: DOOR SWICH

A2.1
 04/27/15

FLOOR PLAN
 SCALE: 1/4" = 1'-0" x 1/4" = 3/8"
 SCALE: 1/8" = 1'-0" x 1/8" = 1"
 NOT TO BE USED FOR CONSTRUCTION

Mark Young
 Vice President, Sales and Leasing
 Direct | 651-233-2435
 Mobile | 651-307-2371

John Higgins
 Vice President, Sales and Leasing
 Direct | 651-209-0520
 Mobile | 612-702-3104

7300 Hudson Blvd., Suite 210
 Oakdale, MN 55128
 Main | 651-731-0708
 Fax | 651-735-1228
 www.crossroadsproperties.net

