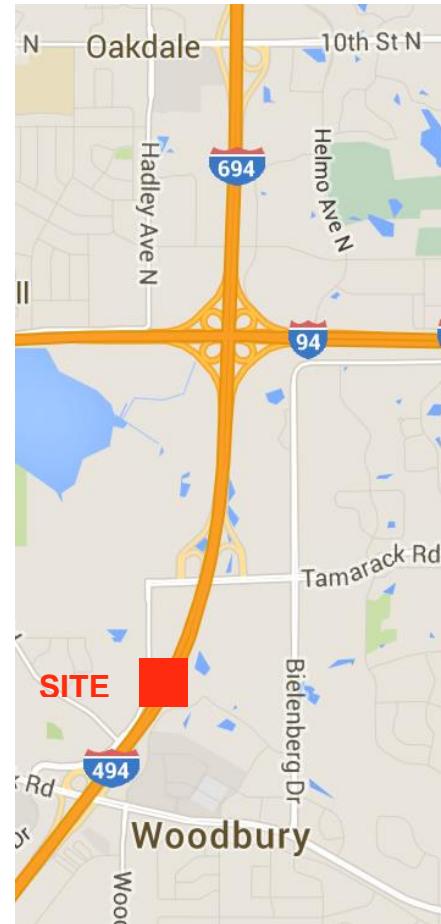
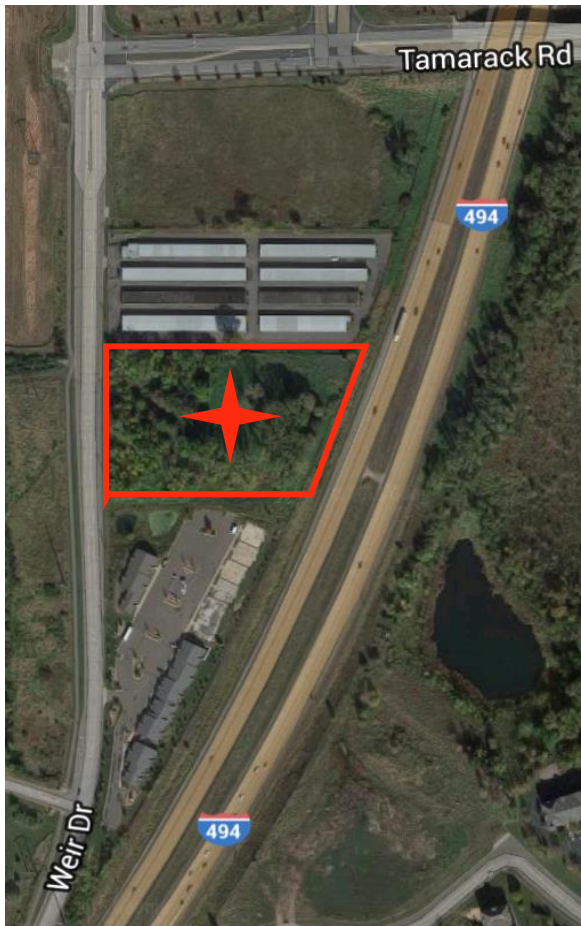


**For Sale or
Lease**

**Woodbury Land with Build to Suite Option
975 Weir Drive, Woodbury MN 55125**



Land For Sale in Woodbury

Lot Size:	4.22 Acres
Asking price:	\$5.95 psf or \$1,093,748
BTS:	Build to Suite options are available <ul style="list-style-type: none">• Office 15,000 sf – 51,800 sf• Office/ Showroom: 55,500 sf
Taxes:	\$23,061.00
PID:	08.028.21.22.0012
Zoning:	Business Campus District

Mark Young
Vice President, Sales and Leasing
Direct | 651-233-2435
Mobile | 651-307-2371

John Higgins
Vice President, Sales and Leasing
Direct | 651-209-0520
Mobile | 612-702-3104

7300 Hudson Blvd., Suite 210
Oakdale, MN 55128
Main | 651-731-0708
Fax | 651-735-1228
www.crossroadsproperties.net

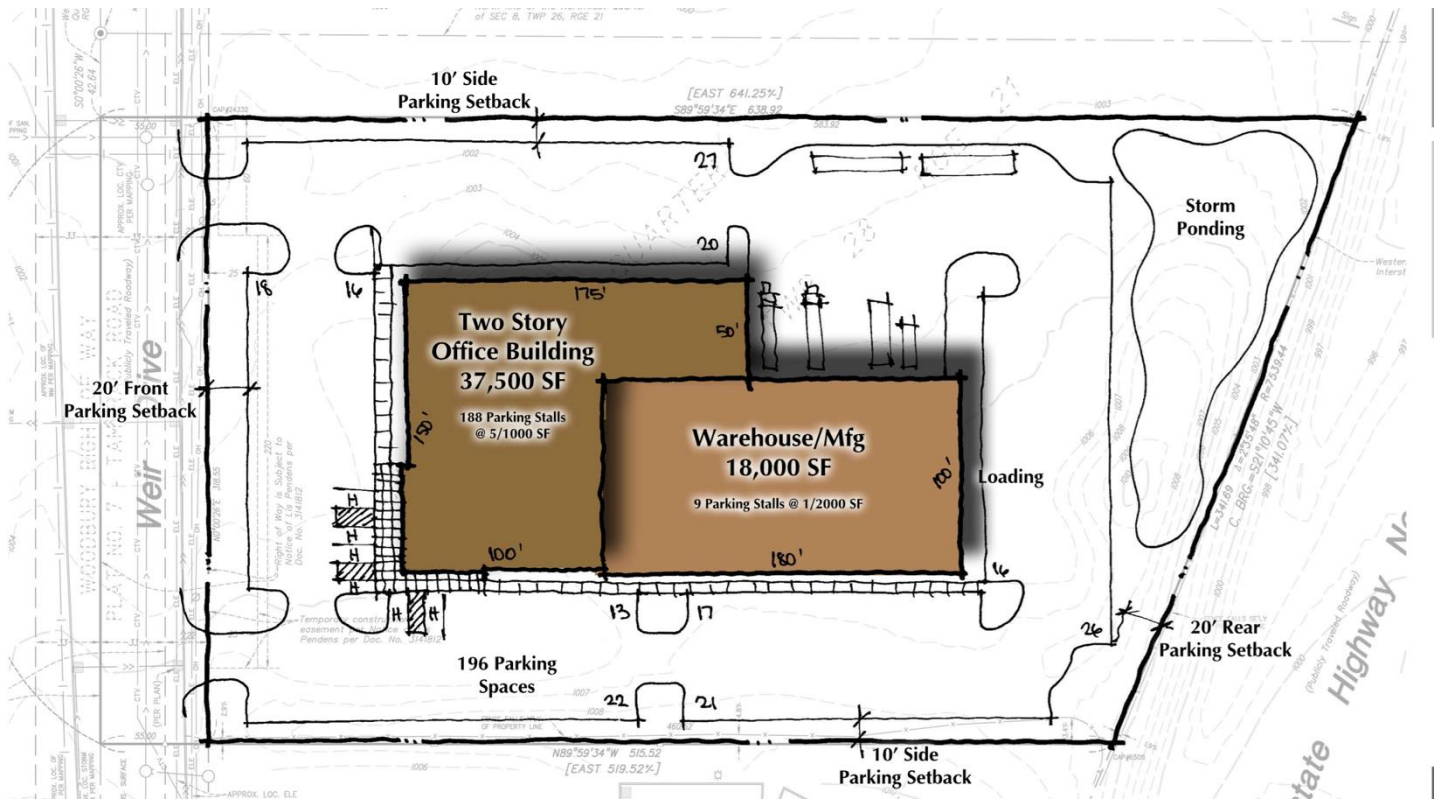
**CROSSROADS
PROPERTIES**

**For Sale or
Lease**

**Woodbury Land with Build to Suite Option
975 Weir Drive, Woodbury MN 55125**

Industrial Build to Suite

- 55,500 Total Square Foot
 - 37,500 SF Office/ Tech Area
 - 18,000 SF of Warehouse Area
- 197 Parking Stalls



- 50' clear height (max allowed by the city of Woodbury)

Mark Young
Vice President, Sales and Leasing
Direct | 651-233-2435
Mobile | 651-307-2371

John Higgins
Vice President, Sales and Leasing
Direct | 651-209-0520
Mobile | 612-702-3104

7300 Hudson Blvd., Suite 210
Oakdale, MN 55128
Main | 651-731-0708
Fax | 651-735-1228
www.crossroadsproperties.net

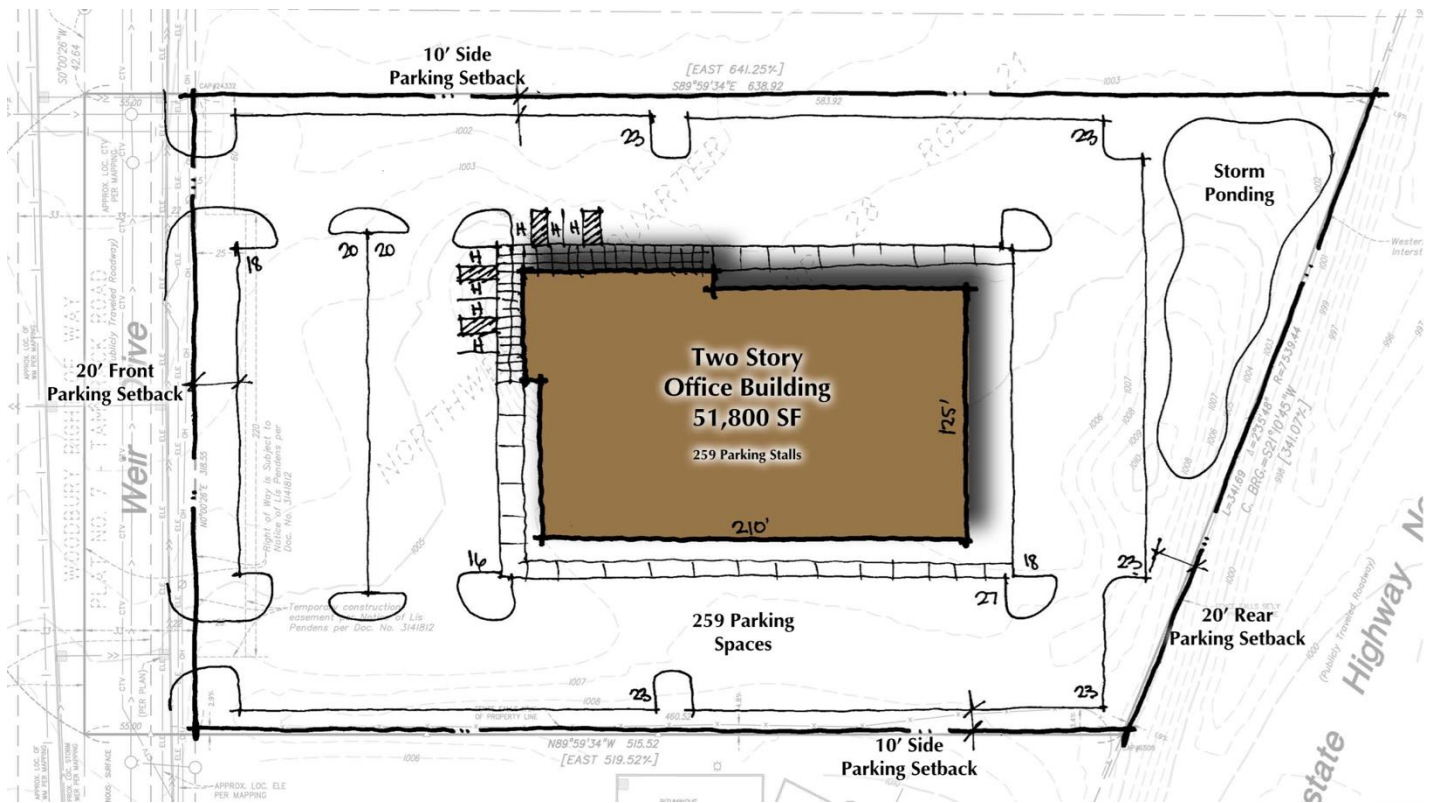
**CROSSROADS
PROPERTIES**

**For Sale or
Lease**

**Woodbury Land with Build to Suite Option
975 Weir Drive, Woodbury MN 55125**

Office Build to Suite

- 51,800 Total Square Foot



- 259 Parking Stalls

Mark Young
Vice President, Sales and Leasing
Direct | 651-233-2435
Mobile | 651-307-2371

John Higgins
Vice President, Sales and Leasing
Direct | 651-209-0520
Mobile | 612-702-3104

7300 Hudson Blvd., Suite 210
Oakdale, MN 55128
Main | 651-731-0708
Fax | 651-735-1228
www.crossroadsproperties.net

