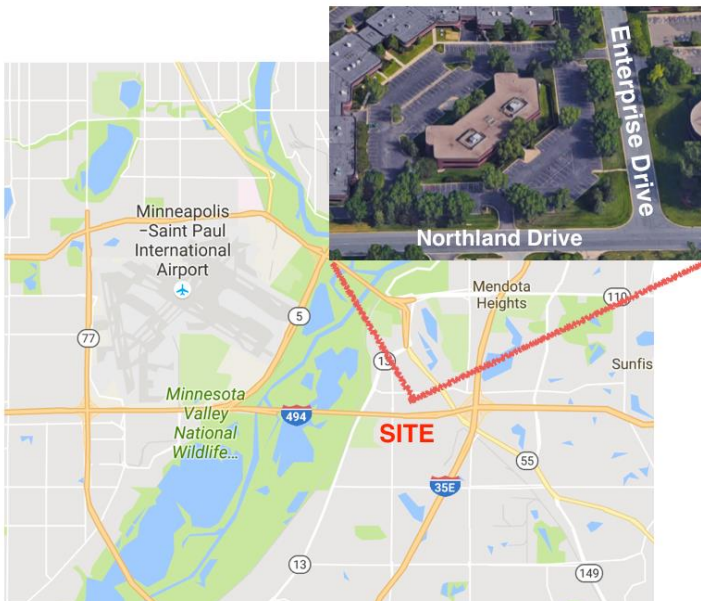


# For Lease

## 1333 Northland Drive Mendota Heights, MN



### Move-In Ready Office



Building Size:	34,318 sf
Renovated:	2010
Available Suite:	
210 -	5,088 SF
230 -	3,723 SF
Min SF:	1,500 SF
Max SF:	8,811 SF

Lease Rate:	\$11.50
Cam/ Taxes:	\$8.50

- Located 494 & Pilot Knob Road
- Move-in ready office space
- Class - A interior finishes

Mark Young  
Vice President, Sales and Leasing  
(D) 651-233-2435  
(M) 651-307-2371

John Higgins  
Vice President, Sales and Leasing  
(D) 651-209-0520  
(M) 612-702-3104

7300 Hudson Blvd., Suite 210  
Oakdale, MN 55128  
Main | 651-731-0708  
Fax | 651-735-1228  
[www.crossroadsproperties.net](http://www.crossroadsproperties.net)

**CROSSROADS**  
PROPERTIES

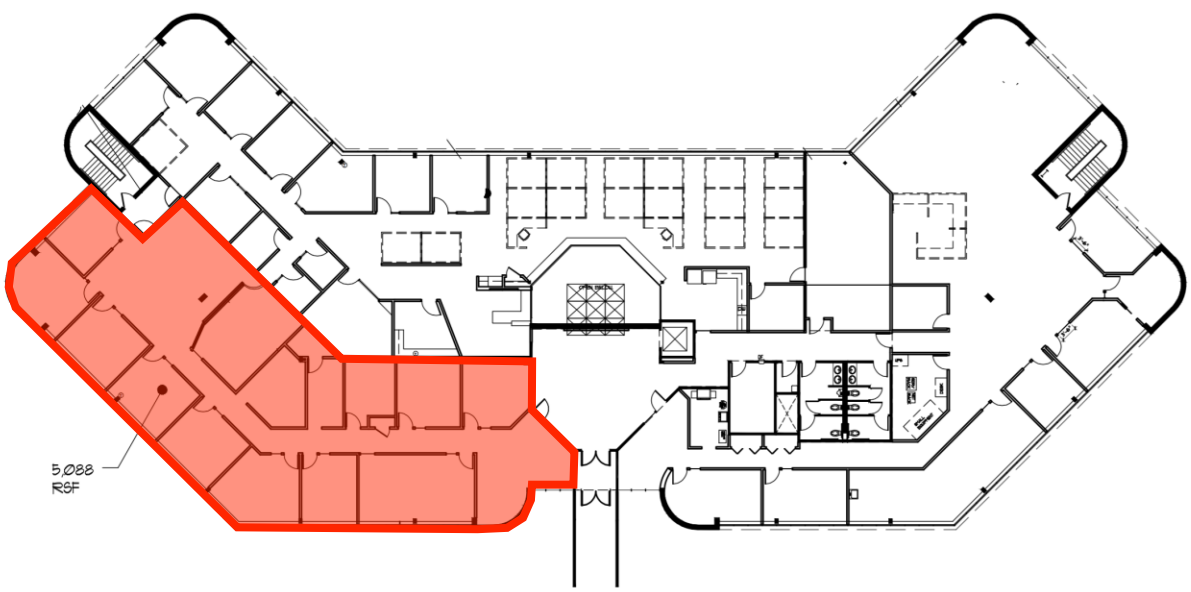
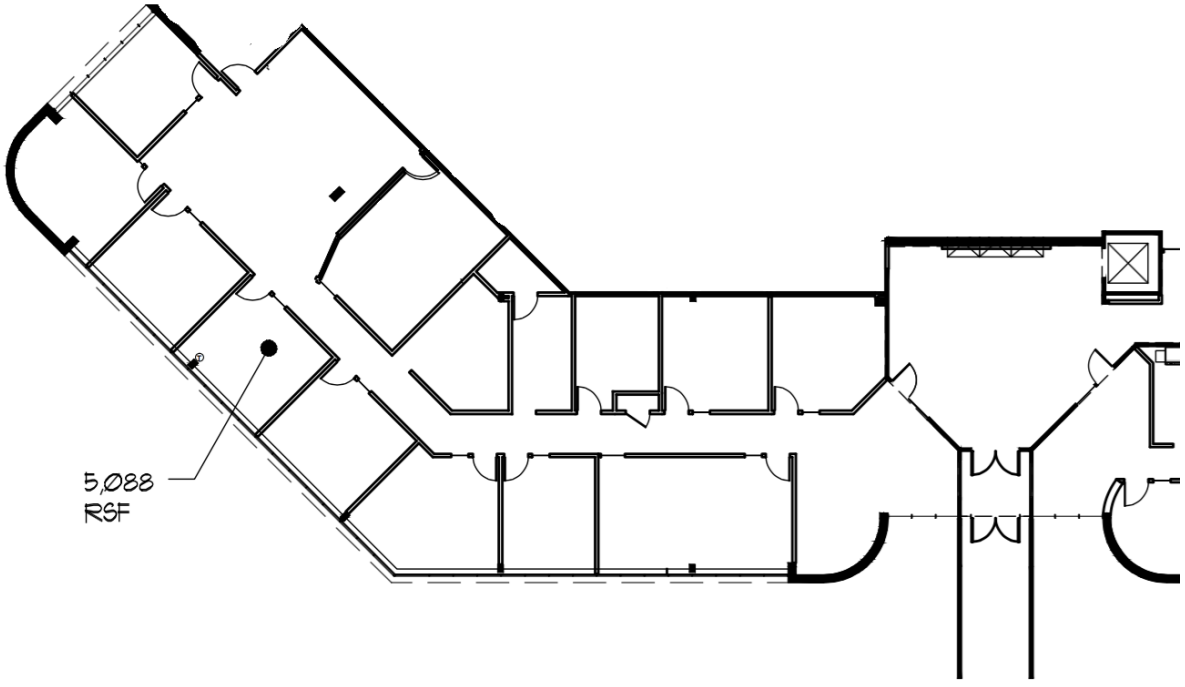
## Notes

- Building Type: Office
- Available: Immediately
- Lease Rate: \$11.50 Net
- CAM/ Taxes: \$8.50 PSF
- Available Space:
  - Suite 210 - 5,088 SF
  - Suite 230 - 3,723 SF
  - Total - 8,811 SF

## Site Plan



SUITE 210 - 5,088 SF





Suite 230 - 3,723 SF

