

## Office Lease

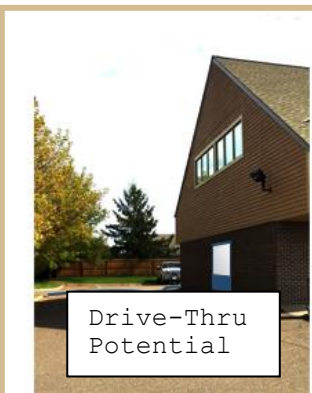
Greeley Square Building  
1903 Greeley Street South, Stillwater MN 55082



### PROPERTY DETAILS

- Approximately 10,000 SF Building
- Term length negotiable
- Available suites:
  - Suite 100 (2,052 SF)
  - Suite 201 (631 SF)
  - Suite 202 (1,101 SF)
  - Suite 206 (1,000 SF) Build to Suit
- \$17/SF MG + utilities for 1<sup>st</sup> floor suites
- \$15/SF for 2<sup>nd</sup> floor suites
- Potential uses:
  - Replace your home office
  - Medical
  - Professional office
- Great access to Hwy 36 and Hwy 694
- Signage available
- Recently updated and remodeled

### ADDITIONAL PHOTOS



Mark Young  
Vice President, Sales and Leasing  
Direct | 651-233-2435  
Mobile | 651-307-2371

John Higgins  
Vice President, Sales and Leasing  
Direct | 651-209-0520  
Mobile | 612-702-3104

7300 Hudson Blvd., Suite 210  
Oakdale, MN 55128  
Main | 651-731-0708  
Fax | 651-735-1228  
[www.crossroadsproperties.net](http://www.crossroadsproperties.net)

CROSSROADS  
PROPERTIES